

DR. PHILLIPS HIGH SCHOOL

VISUAL & PERFORMING ARTS MAGNET



PANTHER BAND MEMBER HANDBOOK

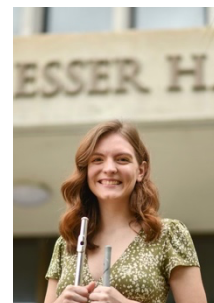
2023 – 2024



CHARLES WATFORD
DIRECTOR
charles.watford@ocps.net



MATTHEW MALHIOT
DIRECTOR
matthew.malhiot@ocps.net



SARAH LIGHTBODY
DIRECTOR
sarah.lightbody@ocps.net

JACKIE RAMSEY
PRINCIPAL

TABLE OF CONTENTS

Introduction.....	3	Uniforms.....	10-11
Ensembles.....	3-5	Marching Uniforms.....	10-11
Marching Band.....	3	Concert Uniforms.....	11
Concert Band.....	4	Football Games.....	11-12
Symphonic Band.....	4	Pre-Game.....	11
Wind Ensemble.....	4	Stadium Seating.....	12
Color Guard.....	5	Half-Time & Post-Game.....	12
Jazz Band 1.....	5	Travel.....	12-14
Jazz Band 2.....	5	Policies.....	13
Attendance.....	6-7	Band Trip Reminders.....	13-14
Policy.....	6-7	Code of Conduct.....	14
Summer Band Camp.....	7	Band Room Policies.....	14-15
Alternate Status.....	7	Band Office Phone.....	14
Grading Policy.....	8	Chair Placement &	
Financial Obligations.....	8	Challenges.....	14-15
Rehearsal & Performance		Music and Music Library.....	15
Procedures.....	8-10	Instrument Storage Lockers.....	15
Concert Ensembles.....	8	Bulletin/Dry Erase Boards.....	15
Marching Band.....	9	Practice Rooms.....	15
Public Performances.....	9	20-21 Band Calendar.....	16
All-State Band.....	9	Mental Notes.....	17
All-County Band.....	10	Band Program Contract.....	18
Solo & Ensemble MPA.....	10		

INTRODUCTION

Welcome to Dr. Phillips High School Band Program!

The purpose of this Handbook is to provide valuable information regarding the Band Program at Dr. Phillips High School. The Band Program provides enrichment and serves an important part of the total high school experience. The Band represents a large, colorful, diverse, and highly disciplined segment of the school. The Band Program contributes a great deal to the sense of community throughout Central Florida through performances of the bands at sporting events, concerts, and community events.

To consistently achieve and maintain the high standard of excellence desired by this organization, members should familiarize themselves with the regulations, procedures, and expectations of the program. We have attempted to answer the most common questions about the band program in this Handbook. Please consult the Directors if a question not covered in the Handbook should arise.

ENSEMBLES

MARCHING BAND

The Marching Band is a musical marching unit organized to provide entertainment for: football games, pep rallies, band festivals, parades, and contests.

The Marching Band is the combined forces of the DPHS Wind Symphony, Symphonic Band, Concert Band, and Color Guard. As per Orange County Public School guidelines, membership in the Marching Band is required by all students involved in the Band Program. It is an integral part of instrumental music education at Dr. Phillips High School. Membership requires: **TOTAL DEDICATION, MAXIMUM EFFORT, and INVOLVEMENT** in all aspects of marching, playing, and performance. The full Marching Band rehearses on Tuesday evenings and Thursday afternoons. Additional weekly rehearsals take place for members in the Color Guard and Percussion (Front Ensemble and Battery) with their instructors, while woodwind and brass musicians will have sectionals scheduled by the section leaders before or after school throughout the fall.



CONCERT BAND

The Concert Band is comprised of 9th & 10th grade students with previous instruction in wind instruments. It consists of modern band instrumentation and provides instruction in common-practice period and twentieth century wind literature and transcriptions. The Concert Band is a class that meets 3rd period every day and performs at several concerts and the District Concert Band Music Performance Assessment each year. Private study is encouraged for all members of the Concert Band. Some afternoon rehearsals may be required, and attendance is mandatory.

SYMPHONIC BAND

The Symphonic Band is comprised of 9th – 12th grade students with previous instruction in wind instruments. It consists of modern band instrumentation and provides instruction in common-practice period and twentieth century wind literature and transcriptions. The Symphonic Band is a class that meets 5th period every day and performs at several concerts and the District Symphonic Band Music Performance Assessment each year. Private study is encouraged for all members of the Symphonic Band. Some afternoon rehearsals may be required, and attendance is mandatory.

WIND SYMPHONY

The Wind Symphony is comprised of mostly 10th - 12th grade students with previous instruction in wind instruments and is the top performing wind group at Dr. Phillips. Membership is by audition only. The repertoire of the ensemble is extensive and advanced (college level). Private study is expected of members in this ensemble. The Wind Symphony meets 4th period every day. The Wind Symphony performs at several concerts and District and State Concert Band Music Performance Assessments each year. Some afternoon rehearsals may be required, and attendance is mandatory.

COLOR GUARD

The Color Guard is the visual ensemble that greatly enhances the performances of the Marching Band. Members learn from skilled instructors in the areas of flag, rifle, saber, and dance. Members of the Color Guard are members of the Panther Band and take part in all marching performances and rehearsals. The Color Guard continues in the spring semester each year with "Winter Guard", an activity that begins at the end of marching season in November and concludes in mid-April. Students in the fall Color Guard are highly encouraged to participate in the Winter Guard Program.

JAZZ BAND 1

Jazz Band 1 is a select group of instrumentalists from the Band Program. Membership is by audition only. The repertoire of the ensemble is selected from a variety of jazz styles. Jazz Band 1 is a full-year credited class that meets after school on selected days. Jazz Band 1 performs at several concerts and District and State Music Performance Assessment each year.

JAZZ BAND 2

Jazz Band 2 is a select group of instrumentalists from the Band Program (with the possible exception of piano, bass and guitar). Membership is by audition only. The repertoire of the ensemble is selected from a variety of jazz styles. This ensemble does not meet for credit, however, is a great opportunity for band members to gain jazz experience through performance. Jazz Band 2 performs at several concerts and participates in the District Music Performance Assessment each year.

ATTENDANCE

POLICY

Band members are required to attend all rehearsals and performances. As a co-curricular course, rehearsals and performances are part of the educational process. Absences affect not only the individual who is absent, but also the entire ensemble. An absence necessitates repeating educational instruction when the student returns, as well as eliminating the opportunity to develop blend, balance, and precision with the other students in the ensemble. Students must be on time for all Band functions. Learning to be early (on time) now will establish a lifelong habit that is critical to success.

AFTER SCHOOL REHEARSALS

Tuesday and Thursday during marching season are specifically scheduled band rehearsal days. Please do not schedule work, appointments, club meetings, detentions, etc. during our rehearsal times. An absence affects not only the individual who is absent, but also the entire ensemble. Every effort will be made to advise of cancellations so that you can use your time productively.

Please wear BLUE shirts to all rehearsals!

MARCHING BAND REHEARSALS

Tuesdays: 6pm – 8:30pm

Thursdays: 2:30pm – 5pm

In addition, Percussion.

EXCUSED ABSENCE FROM A REHEARSAL

Except in cases of extreme emergency or illness, Band members will not be excused from rehearsals. Appointments, meetings, work, vacations, etc. will not be valid excuses for missing a rehearsal. If you anticipate an unavoidable absence from rehearsal, please submit a Pre-Arranged Form to the directors **prior** to the intended absence.

Notification does not automatically classify an absence as excused. All absences affect a student's grade because of lost instruction time that cannot be "made up".

UNEXCUSED ABSENCE FROM A REHEARSAL

Any student receiving an unexcused absence from a rehearsal will receive a 40% for that rehearsal grade. **An unexcused absence for marching band will result in the student being placed on alternate status.**

TARDY TO REHEARSALS/PERFORMANCES

Attendance will be taken at the beginning of a rehearsal or performance. If a student is habitually late for rehearsals, they may be placed on alternate status and their participation grade will be lowered. In addition to a lowered grade, any student arriving late for a performance will lose their third-quarter break and may forfeit the opportunity to perform.

ABSENCE FROM A PERFORMANCE

Performances are major test grades. Any absence, which is not brought to the attention of the directors for approval prior to the performance will be considered unexcused. Unexcused absences count as a 40% for a major test grade and may potentially result in the individual's removal from the Band Program. If you anticipate an unavoidable absence from a performance, please submit a written request to the directors at least one month prior to the intended absence. Notification does not automatically classify an absence as excused.

SUMMER BAND CAMP

Band Camp starts the Monday three weeks before the first day of school. The camp lasts two weeks and jumpstarts the Marching Band season. Members will learn marching basics, rehearse halftime show music, and begin learning the halftime show drill. All members are expected to attend if they are in town. Excused absences will be considered for students that are out of town **ONLY** if a written note from the student's parents is received prior to the start of camp. Students that have an unexcused absence will likely be placed on alternate status. Alternate status does not relieve the students from his/her rehearsal and performance obligations.

ALTERNATE STATUS

It is imperative that all members of the Marching Band and Color Guard be present at all rehearsals and performances. We understand that students get sick and unforeseen emergencies come up. However, our success as an organization will be dependent on our attendance. Even one person missing from a rehearsal or performance affects all other members. Each member is relied upon heavily to maintain their responsibilities in the drill; we cannot improve the show or make changes when we have "holes" in our drill at rehearsals. "Holes" at performances drastically affect the confidence of the performing members around that missing person, which in turn affects the confidence of the entire ensemble. We also lose important musical elements from missing members; the performance simply does not sound the same without them! Everyone is important!

In an effort to maintain the quality, we make use of "alternates" when and where necessary. Alternates are students that are members of the Marching Band, but they do not have a designated position in the show for one or more musical selections. Students are placed on alternate status for a number of reasons: they may have missed part or all of a summer camp, they may have missed a rehearsal unexcused, they may be chronically tardy to rehearsals or performances, they may be involved in another sport or club at school, or they may simply have just moved into the area and be a new student at Dr. Phillips. It is our goal to get our alternates worked into the show at some point, provided that there have been no problems with the student and that the drill allows for the addition of the student and drill coordinate. Alternates are required to be at rehearsals and performances, as most of these students will perform at some point. Alternates are members of the Marching Band and are therefore responsible for learned material. The only way for us to experience the greatest educational return and level of achievement is for every position in the drill to be occupied at rehearsals and performances.

GRADING POLICY

PERFORMANCE: 60%

REHEARSALS/PARTICIPATION: 20%

CLASSWORK: 10%

INDIVIDUAL TESTING: 10%

As a co-curricular performance-oriented activity, attendance is required at rehearsals and performances beyond regular school hours. This time will be kept to the necessary minimum, realizing that other studies as well as family and personal time are important. This includes rehearsals, concerts, festivals, competitions, etc.

FINANCIAL OBLIGATIONS

The cost of operating a successful active band program is high. Only a portion of this cost is funded by the school system. The remaining budget is from fundraising activities and rentals. **For this reason, it is very important that all members contribute their fair share by raising or contributing \$150.00 that goes towards operating expenses and \$50.00 annually for students who use school-owned instruments.** Numerous fundraising opportunities are provided for students to raise the needed funds, mostly during the fall semester. Students interested in

auditioning for the All-County and All-State Band are responsible for audition expenses. The student is responsible for the cost of Solo & Ensemble entries and accompanists as well, the only exception being large ensembles assembled by the directors.

REHEARSAL AND PERFORMANCE PROCEDURES

CONCERT ENSEMBLES

- Every member should bring instruments, music, and proper equipment to every rehearsal and performance.
- In case of absence, students must ensure that all shared music and instruments are available for the rehearsal.
- Everyone needs a PENCIL in every rehearsal.
- There is to be no talking or disturbance during rehearsals. Subdued talking is permitted with the director's permission or when the director leaves the podium.
- Talking should cease when anyone stands on the podium.
- Gum chewing or eating is not permitted during rehearsals or performances.
- Posture is of utmost importance. Students should avoid crossing legs or angles and/or slumping when seated in chairs. Do not lean back in your chair! Do not lean on music stands!
- The board should be read when entering the rehearsal room for special instructions.
- Music stands, folders, instruments, and equipment should be kept in their proper storage area when not in use. Music and folders should not be left on the music stands.
- All trash should be thrown in a wastebasket.
- Students may not bring books, personal belongings, or study materials to their seats.
- Loud talking or any other inappropriate behavior is not allowed in the Band Room and neighboring facilities.

MARCHING BAND

Each year it is necessary for the Marching Band to meet prior to the beginning of school. All members of the band are expected to attend Band Camp and other pre-season rehearsals scheduled by the director.

- Everyone needs a PENCIL in every rehearsal.
- In addition to the Directors, adjunct Staff Members and Drum Majors have the authority to run rehearsal and make decisions at the request of the Directors. All members of the Band are expected to respect their authority at all times.
- Students are expected to be in their positions on time with instruments, drill charts, pencils, music, etc.

There is to be no individual playing before rehearsal or at any time during a rehearsal, outdoors or indoors, unless the Directors, Staff Members or Drum Majors specifically deem it necessary. Instrument warm-up will be done together under the direction of the Directors and Staff Members.

PUBLIC PERFORMANCES

Every student will receive a schedule of performances the Band Program will be attending throughout the year. Information regarding these events will be posted on the board. It is the student's responsibility to know this information. The board should be read daily. Always report (rain or shine) to the designated meeting place. Do not call the Directors unless there is an emergency. If in doubt, phone a Drum Major or Section Leader.

ALL-STATE BAND

The All-State Honor Band members are drawn, through auditions, from the finest musicians in the state of Florida. They rehearse and perform at the Florida Music Educators Associations (FMEA) convention each January.

Participation in the All-State Band is a great honor. All students are encouraged to prepare the audition materials and although auditioning is not a requirement, it is strongly recommended. Auditions are held in September each year. Summer is the ideal time for preparation of those materials.

Students must first audition for and be approved by the director. All fees associated with auditions and participation in the All-State ensembles is the responsibility of the student.

ALL-COUNTY BAND

The Orange County All-County Band members are drawn, through auditions from the finest student musicians in Orange County. They rehearse and perform at a local high school under the direction of a guest conductor. Participation in the All-County Band is extremely rewarding and fun. All students are encouraged to prepare the All-County audition materials and audition in mid-November. Students must first audition for and be approved by the director. VPA Magnet students are required to audition for All-County or All State (preferably both.)

SOLO & ENSEMBLE MPA

The Solo & Ensemble Music Performance Assessment of the Florida Bandmasters Association is held in early February each year. The educational experience of preparing a solo or a chamber ensemble is invaluable. In addition, the opportunity to perform for an audience and receive constructive comments from a qualified adjudicator is a wonderful learning experience. Participation in the ensemble portion of the MPA may be required at the Director's discretion. The music performed must be on the approved list on the Florida Bandmasters Association website.

Participation is required to receive a band letter or bar. All Visual and Performing Arts Magnet students must participate in Solo and Ensemble.

UNIFORM POLICIES

MARCHING BAND

- Uniforms are checked out before each game and returned immediately upon our return to campus in order to be cleaned and inventoried. Uniform fittings are typically scheduled during the first week of Band Camp.
- Uniforms will be kept in the Uniform Room at all times. Students will dress at the school for all uniformed performances. Students are responsible for wearing their official Band t-shirt, black shoes, black socks, and white gloves. Orders for the marching shoes will be taken during Band Camp. Students will not be allowed to perform without all parts of the uniform.
- When the marching uniform is worn, members are not to wear watches, jewelry, or excessive make-up. Longer hair must be pulled up and secured so it stays off the collar. No un-natural hair colorings. An important part of wearing the uniform is looking uniform across the band.
- Uniforms will be checked out from the Uniform Room. You must check out your own uniform by jacket number. After the performance, return the uniform to the Uniform Room. It must be complete and hung up properly on the properly numbered hanger before the Uniform Officers will accept it. If the uniform needs repair, please let a Uniform Parent know when checking it in.
- The uniform for Pep Rallies consists of the official Band t-shirt and school dress code shorts or pants.
- Marching rehearsal dress for should be appropriate, comfortable clothes.
- Outside temperature (hot and cold) should be taken into consideration when you pick your attire. For Summer Band, wear white t-shirts, shorts, tennis shoes with socks, hats and sunscreen. No sandals or backless shoes allowed.
- Students must follow OCPS Dress Code at all times when with the Dr. Phillips Band Program!

CONCERT UNIFORM

The Concert Band wears formal attire for concert performances. Members are responsible for providing the following items:

GENTLEMEN:

- Tuxedos provided by the band department
- Students must provide:
 - Tuxedo Shirt
 - Black lace-up band/dress shoes
 - Black socks

LADIES:

- Black concert dress provided by the band department
- Students must provide:
 - Black, closed-toe dress shoe, no higher than 2" heel

No medals or patches are to be worn on the uniform at any time. We want to look uniform.

FOOTBALL GAMES

The Panther Band will perform at all football games during the season. Football games are a regular opportunity for the Band and Color Guard to showcase all of their hard work! Report times for game days are posted in advance on the information board. On nights of home games, students are typically done around 10:30pm. On nights of away games, students are typically done around 11:30pm.

Attendance is very important for all football games. We want each student to have the best experience possible; that will happen when attendance is a priority with every member!

PRE-GAME

- Report to the band room at the appointed time for uniform distribution, dress, and inspection. Following inspection, instructions for the evening will be given.
- When dismissed from the Band Room, students are to load buses (away games) or set up the marching line outside.
- Whether home or away, the Panther Band will march into the stadium.
- Listen for instructions - every situation is different.

STADIUM SEATING

- Each student should file to his/her seat-determined by the director.
- Once the student is in place, he/she should remain quiet for special instructions.
- Uniforms are to be worn properly at all times. Do not unzip or undo your uniform unless instructed to do so.
- Non-band members are not allowed within the band section. Please explain this to friends and family.
- How we look in the stands is important.
- Refreshments (drinks and food) are not allowed in the stands.
- Third quarter break is not automatic but must be earned. When you do get a break, you must be back in place, ready to play with 2 minutes remaining in the third quarter.
- Students are not to leave the band unless accompanied by a chaperone (except during your break). Students should always stay in groups of two or more for your own safety.
- Student conduct should always be professional for the duration of the trip.

Sometimes members of the audience are rude-show your school pride and do not respond. ALWAYS be ladies and gentlemen! We should treat visiting bands, directors, and chaperones courteously. If you cannot say something good about the visiting band, "Don't say anything at all!"

HALF-TIME & POST-GAME

- Band members should file from the stands in an orderly manner to the designated warm-up area.
- While the other band performs, be a good audience. You are 'on stage' at all times and do not want to detract from the other band's performance.
- After the half-time performances, members will return quickly to their seats in the stands and wait for instructions.
- At the conclusion of the game the Panther Band will play the school Fight Song and Alma Mater. Immediately following all students will move to the buses in formation and load all equipment for the return trip to school (for away games).
- Uniforms are to be returned properly - they may NOT be taken home.
- Put all music, instruments and equipment away before leaving.
- PLEASE make arrangements for a ride home before the game. We will post the approximate times of our arrival so that your parent can be waiting. It is not fair for the Directors or Chaperones to have to wait for your ride to arrive.

TRAVEL

A travel itinerary and procedures list will be published for each major trip. It is important that these instructions be followed so the band can move quickly, safely and efficiently. The parent or guardian of each student will be expected to fill out an Emergency Treatment Authorization Form and have it notarized. Students will not travel with the band without this form completed and turned in.

POLICY

- Students will be expected to sign up for the bus seating and/or room lists at the announced time. Any students failing to sign the lists will be assigned a seat and/or room. Students will not be allowed to change buses or rooms without permission of the director.
- Students are asked to be careful and safe. If an accident, injury, or illness does occur, the chaperone in charge should be notified at once. The chaperone will then notify the director.
- For Concert Ensemble performances, music will be transported in music cases. During the Marching Season, each member will be responsible for his or her own flip-folder, music and lyre at all times.
- All band members are responsible for set up and strike of concert settings. If everyone does their part, things run smoothly.
- Chaperones will be in charge of each bus. With the help of the band officers assigned to each bus, they will be responsible for calling roll and maintaining good conduct. No bus should be permitted to leave a stop until the roll is checked. Report that you are ready to move to the Director.
- While staying in hotel/motel, students should be considerate of the other occupants, especially at night. Rooms should be left neat and hotel/motel property should not be damaged. All telephone calls should be made from a pay phone in the lobby and not charged to the room.
- It should be noted that proper behavior is expected when on a school-sponsored trip. The Orange County Code of Student Conduct will be observed at all times. Undignified conduct or reckless behavior may result in disciplinary action, suspension from school, and/or dismissal from the Band Program.

- Students may not leave their rooms after curfew or bed check.
- Students may not visit rooms occupied by the opposite sex without a chaperone.
- POSSESSION OR USE OF ALCOHOL, NARCOTICS, OR TOBACCO PRODUCTS IS FORBIDDEN. These matters will be turned over to the proper legal authorities.

BAND TRIP REMINDERS

- Chaperones and officers are to be obeyed and treated with courtesy and respect. They are the delegates of the director.
- The complete uniform (Concert or Marching) should be worn properly when in public. You are representing Dr. Phillips High School.
- Profanity, singing, chanting, horseplay and screaming are prohibited on the bus - all bus rules apply. Tape players, CD players, or radios WITHOUT HEADPHONES will not be allowed on the buses. We will not be responsible for lost or stolen items.
- Students may not change buses without the permission of the director. Roll will be checked on each bus before departure.
- All students must travel to and from performances on buses, not in personal cars. Any student who needs to depart a performance with his/her parent or guardian should submit a request signed by the parent or guardian at least three days in advance of the performance. If approved, their parent/guardian must appear in person to pick up the student from the Director.
- No eating or drinking will be permitted except when designated by the director.
- Students are responsible for their own equipment and instruments.
- The operations officers will load the equipment truck or buses.
- Students will receive an itinerary of activities for all major trips. Students are responsible for knowing departure times and should be ready on time.
- Any illness or injury should be reported to the head chaperone and director immediately, no matter how unimportant it may seem.
- Upon arrival at a destination, students should remain seated until instructed to unload by the officer or chaperone in charge.
- Conduct of students in public establishments (restaurants, etc.) should be subdued and courteous.

CODE OF CONDUCT

Students are responsible for the reading of and adherence to the Orange County Code of Student Conduct.

- Please respect both personal property and the property of the Band Program.
- Rude and/or socially unacceptable behavior as defined by the Directors will not be tolerated on the Dr. Phillips campus or during Band activities off campus.
- Public Display of Affection (PDA) will not be tolerated while on Band activities.

All students are expected to display exemplary behavior at all times, especially when participating in school sponsored activities on or off campus. This includes the misuse of social

media. If the above stated expectations are not met, it could lead to your removal from the Band Program and/or, if on leadership, removal from your leadership position.

BAND ROOM POLICIES

BAND OFFICE PHONE

The office phone is not to be used by students for personal business. Parents, please do not call the band office to leave messages for your child. If a message must be relayed or contact made, please call the front office or the attendance office and from there, the appropriate information can be relayed to your son or daughter. The band room office phone number is 407-355-3200 x2382.

CHAIR PLACEMENT & CHALLENGES

The directors will assign students to parts or chairs to achieve proper balance in the ensemble. ALL parts are important and must be played well. An ensemble relies on all of its members for the final product. Therefore, sections may be staggered to provide the best sound possible. The director may re-seat students according to musical progress and preparation.

Students who feel they are deserving of advancement within the section may challenge the person sitting ahead of them. Scales, sight-reading exercises, and current music will be used as challenge materials. The director will judge challenges. Challenges will be scheduled ahead of time with the director's consent. A forfeit will result when one of the participant's is absent for the scheduled challenge.

MUSIC AND THE MUSIC LIBRARY

The music library consists of arrangements, transcriptions, and original works for concert band, marching band, jazz band, as well as a collection of solo and ensemble material. The library is OFF LIMITS to all band students other than librarians. Students may not go into the music files without consent of the director.

USE AND CARE OF MUSIC

- Do not fold, tear, or manipulate music.
- Do not make excessive marks on music.
- Always use a pencil, not ink!
- Students will be charged for music that is lost or not cared for properly.
- Concert folders will be assigned according to instrumentation and parts.
- The director will assign parts.
- Students needing a music part should notify the librarian.
- Absence from school does not relieve the student of the responsibility to have their music at the rehearsal or performance.

INSTRUMENT STORAGE LOCKERS

Lockers are available for storage of student instruments. Combination locks only may be used for security. THE ORANGE COUNTY SCHOOL SYSTEM DOES NOT HAVE INSURANCE TO COVER LOST OR STOLEN PROPERTY. It is suggested that students keep a record of instrument make, model, and serial number for identification purposes. Instrument coverage on their parent's homeowner's insurance policy is suggested.

BULLETIN BOARDS/DRY ERASE BOARDS

Check the posting areas daily for important information. As the primary form of communication, students are responsible for the information posted. Students are not allowed to write on the boards or add anything to the bulletin board without permission of the director. Posted information should never be removed from the bulletin board without permission.

PRACTICE ROOMS

You may NOT use practice rooms during a period in which you have an academic class, so do not ask. Practice room time is at a premium after school, scheduled in advance. Rooms are to be used for band music practice sessions - **not to hang out**. Food and drinks are not permitted in the practice rooms. Instrument cases should not be taken into practice rooms. This will keep the rooms from getting too crowded.

MENTAL NOTES

Some factors, other than musicianship, that have a great bearing on our program:

Are you a part of the problem or part of the solution?

Take pride in everything you do!

Together we can be superior!

Individual effort is vital for success!

Try to do your best, always!

Use your talents to the best of your ability!

Dependability and determination will bring success!

Effort makes it happen!

Remember- YOU, as a member of the Dr. Phillips Panther Band, represent yourself, your family, your school, and your community.



Sun	Mon	Tue	Wed	Thu	Fri	Sat
30	31	1	2	3	4	5
6	7	8 6pm - Marching Rehearsal	9	10 First day of school! 2:30pm - Marching Rehearsal	11	12
13	14	15 6pm - Marching Rehearsal	16	17 2:30pm - Marching Rehearsal	18 Home vs. Lake Minneola	19
20	21 6pm - Marching Rehearsal	22	23	24 2:30pm - Marching Rehearsal	25 Away @ Lake Mary	26
27	28	29 2:30pm - Marching Rehearsal	30	31 2:30pm - Marching Rehearsal	1 Home vs. Timber Creek	2

Sun	Mon	Tue	Wed	Thu	Fri	Sat
27	28	29 2:30pm - Marching Rehearsal	30	31 2:30pm - Marching Rehearsal	1 Home vs. Timber Creek	2
3	4 Labor Day (No School)	5 6pm - Marching Rehearsal	6	7 2:30pm - Marching Rehearsal	8 Home vs. Apopka	9
10	11	12 6pm - Marching Rehearsal	13 JV Home vs. Windermere	14 2:30pm - Marching Rehearsal	15 Away @ Windermere	16
17	18	19 6pm - Marching Rehearsal	20	21 2:30pm - Marching Rehearsal	22 Home vs. Boone -	23 All state auditions HOMECOMING DANCE -
24	25	26 6pm - Marching Rehearsal	27 JV Home vs. Ocoee	28 2:30pm - Marching Rehearsal	29 BYE WEEK (No Game,	30

Sun	Mon	Tue	Wed	Thu	Fri	Sat
1	2	3 6pm - Marching Rehearsal	4 JV Home vs. Lake Nona	5 2:30pm - Marching Rehearsal	6 Away @ Lake Nona	7
8	9	10 6pm - Marching Rehearsal	11	12 2:30pm - Marching Rehearsal	13 Home vs. Olympia - SR	14
15	16 Teacher Work Day (No	17 6pm - Marching Rehearsal	18	19 2:30pm - Marching Rehearsal	20 Away @ West Orange	21 West Side Showcase -
22	23	24 6pm - Marching Rehearsal	25	26 Away @ Ocoee	27 No School - No Work Day	28
29	30	31 6pm - Marching Rehearsal	1	2 2:30pm - Marching Rehearsal	3 Away @ Jones	4 Marching MPA

Sun	Mon	Tue	Wed	Thu	Fri	Sat
29	30	31 6pm - Marching Rehearsal	1	2 2:30pm - Marching Rehearsal	3 Away @ Jones	4 Marching MPA
5	6	7 2:30pm - Symphonic Band	8 1:30pm - Wind Ensemble	9	10	11 7pm - Marching MPA Rain
12 All County Auditions	13	14 Middle School All County 2:30pm - Symphonic Band	15 1:30pm - Wind Ensemble	16	17 Possible Playoff Game	18
19	20	21	22	23	24 Possible Playoff Game	25
19-24 Thanksgiving Break						
26 2:30pm - Symphonic Band	27	28 UCF wind ensemble with DP	29 1:30pm - Wind Ensemble	30	1 Possible Playoff Game	2

Sun	Mon	Tue	Wed	Thu	Fri	Sat
26	27 2:30pm - Symphonic Band	28 UCF wind ensemble with DP	29 1:30pm - Wind Ensemble	30	1 Possible Playoff Game	2
3	4	5 2:30pm - Symphonic Band	6 1:30pm - Wind Ensemble	7	8 Potential Playoff Game	9
10	11	12 7pm - Winter Concert	13	14	15	16
17	18	19	20	21	22	23
24	25 Winter Break!	26 Winter Break!	27 Winter Break!	28 Winter Break!	29 Winter Break!	30
31	1 Winter Break!	2 Winter Break!	3 Winter Break!	4 Winter Break!	5 Winter Break!	6

Sun	Mon	Tue	Wed	Thu	Fri	Sat
31	1	2	3	4	5	6
	Winter Break!	Winter Break!	Winter Break!	Winter Break!	Winter Break!	
7	8	9	10	11	12	13
	Teacher Work Day (No	Students Return	FMEA Conference (All State Students)			
14	15	16	17	18	19	20
MLK DAY (No School)	2:30pm - Clarinet Choir			3pm - Jazz Workshop		
21	22	23	24	25	26	27
2:30pm - Clarinet Choir	6pm - All County Rehearsal			6pm - All County Rehearsal	7:45am - All County Rehearsal	All County Concert
28	29	30	31	1	2	3
2:30pm - Jazz Band	Jazz Pre-MPA 2:30pm - Symphonic Band	1:30pm - Wind Ensemble	2:30pm - Jazz Band			

Sun	Mon	Tue	Wed	Thu	Fri	Sat
28	29	30	31	1	2	3
	2:30pm - Jazz Band	Jazz Pre-MPA 2:30pm - Symphonic Band	1:30pm - Wind Ensemble	2:30pm - Jazz Band		
4	5	6	7	8	9	10
	2:30pm - Clarinet Choir	2:30pm - Symphonic Band	1:30pm - Wind Ensemble	HS Jazz and S&E		
11	12	13	14	15	16	17
		2:30pm - Symphonic Band	1:30pm - Wind Ensemble			
18	19	20	21	22	23	24
Presidents Day (No School)		2:30pm - Symphonic Band	1:30pm - Wind Ensemble			
25	26	27	28	29	1	2
		2:30pm - Symphonic Band	1:30pm - Wind Ensemble			

Sun	Mon	Tue	Wed	Thu	Fri	Sat	
25	26	27 2:30pm - Symphonic Band	28 1:30pm - Wind Ensemble	29	1	2	
3	4	5 2:30pm - Symphonic Band	6 1:30pm - Wind Ensemble	7 8 9 HS concert MPA @ Cypress Creek High School, 1101 Bear Crossing Dr, Orlando, FL 32824, USA			
10	11	12	13	14	15 Teacher Work Day (No	16	
17	18 19 20 21 22 Spring Break (No School)						23
24	25	26 All County Jazz Rehearsal	27	28	29	30	
31	1	2 AC Jazz Rehearsal 2:30pm - Symphonic Band	3 1:30pm - Wind Ensemble	4 5 6 MS Concert MPA			

Sun	Mon	Tue	Wed	Thu	Fri	Sat
31	1	2	3	4	5	6
		AC Jazz Rehearsal 2:30pm - Symphonic Band	1:30pm - Wind Ensemble	MS Concert MPA		
7	8	9	10	11	12	13
		AC Jazz Rehearsal 2:30pm - Symphonic Band	1:30pm - Wind Ensemble	AC Jazz Rehearsal	AC Jazz Rehearsal	AC Jazz Rehearsal &
14	15	16	17	18	19	20
		2:30pm - Symphonic Band	1:30pm - Wind Ensemble	6pm - Percussion Workshop	Drum Major Clinics	
21	22	23	24	25	26	27
5pm - Night of jazz		Night of Jazz 2:30pm - Symphonic Band	1:30pm - Wind Ensemble	6pm - Percussion Workshop		
28	29	30	1	2	3	4
		2:30pm - Symphonic Band	1:30pm - Wind Ensemble	Spring Concert	Drum Major Clinics	

Sun	Mon	Tue	Wed	Thu	Fri	Sat
28	29	30 2:30pm - Symphonic Band	1 1:30pm - Wind Ensemble	2 Spring Concert	3 Drum Major Clinics	4
5	6 2:30pm - Leadership	7 2:30pm - Leadership	8 1:30pm - Wind Ensemble	9 2:30pm - Leadership 6pm - Percussion Workshops	10 Drum Major Clinics 9am - Teacher \$ Receipts	11
12	13	14	15 Drum Major Auditions	16 6pm - Percussion Workshops	17	18
19	20	21 Band Registration Night	22 Band Ice Breaker Percussion Auditions	23 Band Ice Breaker	24 Last day of School!	25
26 Memorial Day (No School)	27	28	29	30	31	1

DR. PHILLIPS HIGH SCHOOL CONTRACT AGREEMENT FOR MUSIC STUDENTS

The success of any music program is dependent on teamwork, with each student completing his/her assigned task. With that understanding, all students who enroll in the Band Program, and their parents, are to sign this contract.

The following is a quote from the Orange County Public School's course descriptions for performance-oriented classes: "As a co-curricular performance-oriented activity, attendance is required for rehearsals and performances beyond regular school hours".

These include but are not limited to:

- Festivals/evaluations/competitions
- Concerts
- Performances for Community, schools, etc.
- Football games
- Parades

It is understood that attendance at these functions is mandatory, and an unexcused absence may result in lowering a student's grade and/or placing them on alternate status if the absence applies to the Marching Band.

Exceptions to this policy are:

- Religious holidays
- Handicapped students whose handicap prohibits participation
- Documented illness
- Family emergencies (approved by School Administration or designee)

I understand the requirements and responsibilities for my son/daughter to be a member of the Dr. Phillips High School Band Program. I have read through and understand the rules and regulations covered in this Handbook.

Print Parent Name

Print Student Name

Parent Signature

Student Signature

SIGN AND TURN IN BY WEDNESDAY, AUGUST 16th